

SC Argus[®] Pro
Sloan[®] Smart Systems



Connect your facility
to the future.

Introducing Sloan SC Argus® Pro, a fluid way to manage your facility.

Monitor and maintain products remotely

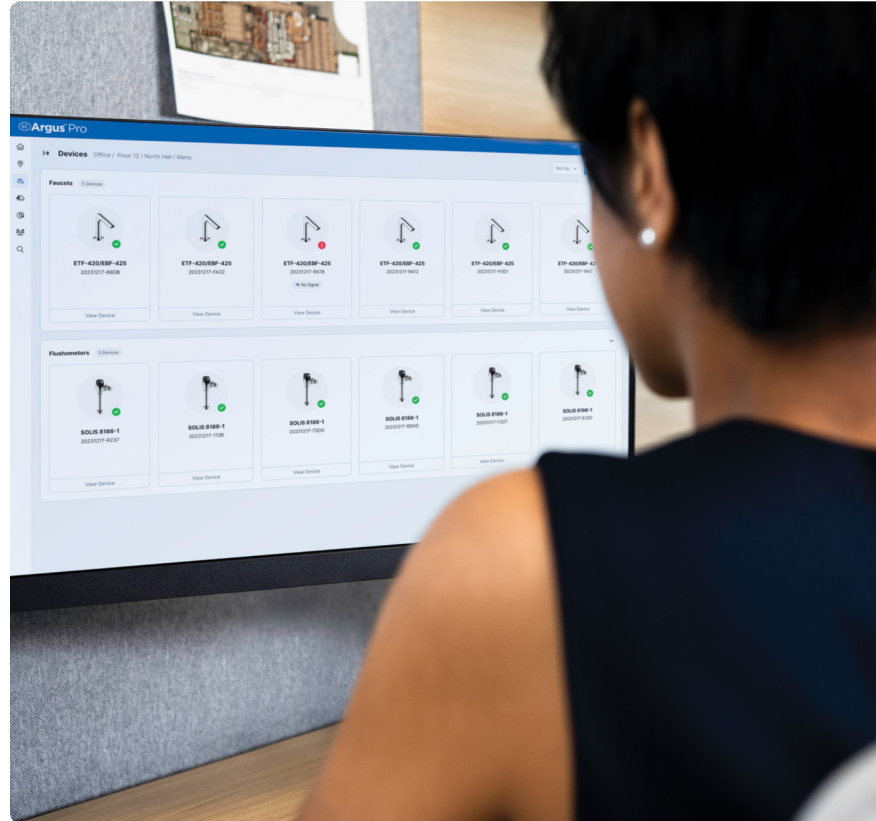
With SC Argus Pro, you'll be able to keep your entire suite of products operational with less downtime. Your data is readily available anywhere there's an internet connection so you'll know the optimal time to perform maintenance without having to walk into each restroom.

Reduce water usage and improve sustainability

SC Argus Pro lets you customize reports and optimize your potential for rebates by providing data about specific event time frames as well as water usage that can also help qualify for LEED and WELL points.

Create a healthier, more hygienic environment

Get the complete picture of your facility's hygiene by understanding faucet-to-flushometer activation ratios and average handwashing time. Remotely flush lines to minimize the risk of stagnant water, odor, and microbial growth for a healthier, more hygienic restroom.



The system at a glance

The SC Argus® Pro suite consists of smart products and the cloud-based SC Argus Pro software.



Smart products

Sloan connected products send performance data to the cloud.



Cloud-based software

The system turns collected data into insights viewed through a web browser.

A comprehensive approach to security

At Sloan, we care deeply about security, which is why we've built SC Argus Pro to employ the best practices for end-to-end customer data security.

Secure data from fixture to cloud

Every communication features encryption between the cloud server and the fixture. We use SOC II compliant Microsoft® Azure platforms—providing a secure cloud framework—ensuring your customer data is protected and stored securely.

Managed user access

For security, adding users is by invitation only. Every user's account information is password protected, and we provide user categories for feature access. Only approved administrators can invite new users, audit activity, manage products, and set account expiration timeframes.

Communication options

Communication options include Ethernet, Wi-Fi, LTE Cellular, with support for Power over Ethernet. Wi-Fi option now supports WPA2 Enterprise authentication.

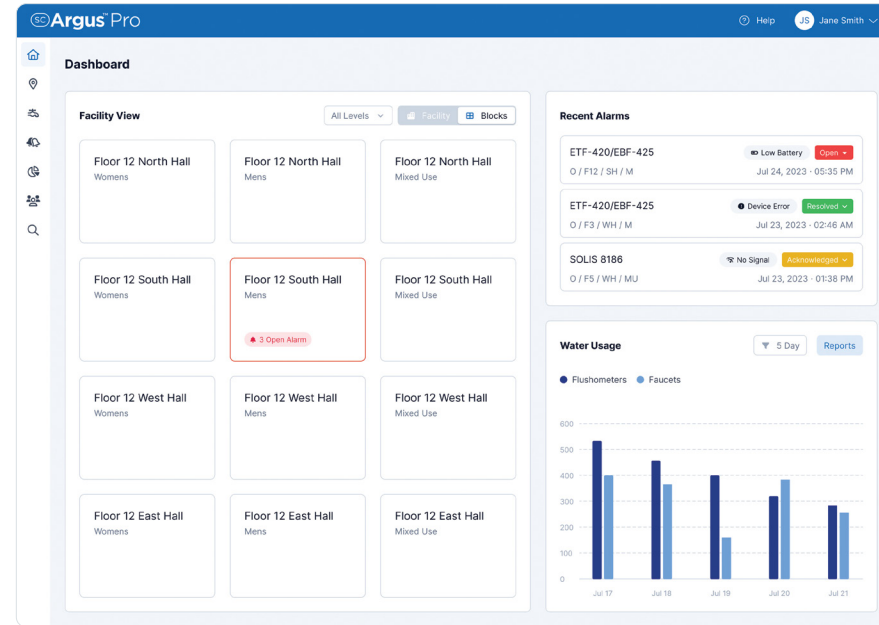
Three-tiered user roles

SC Argus Pro offers granular permissions to set up different accounts for account administrators, facility managers, and installers. The people who maintain your facility get all the information they need and nothing they don't.

Understand the overall status of your facility with vital metrics

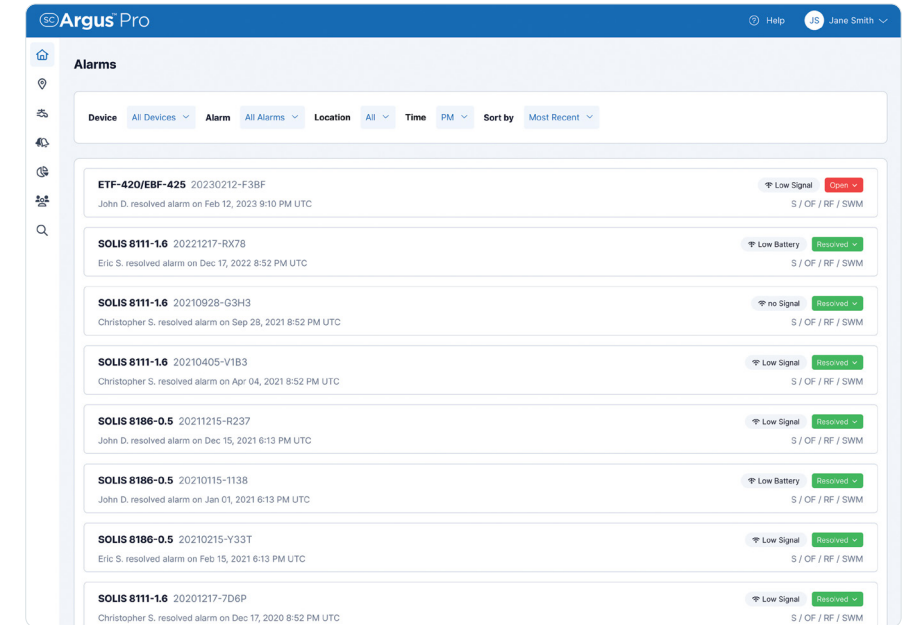
Dashboard

- ✓ Get a quick view of activity across your facility.
- ✓ Customize the names, abbreviations, and views for each room.
- ✓ Identify restroom status through the color-coded room indicators.
- ✓ Swiftly assess the health of your system through recent alert activity.
- ✓ Identify activity patterns and changes in water usage.
- ✓ Clean dashboard layout for easy user experience.



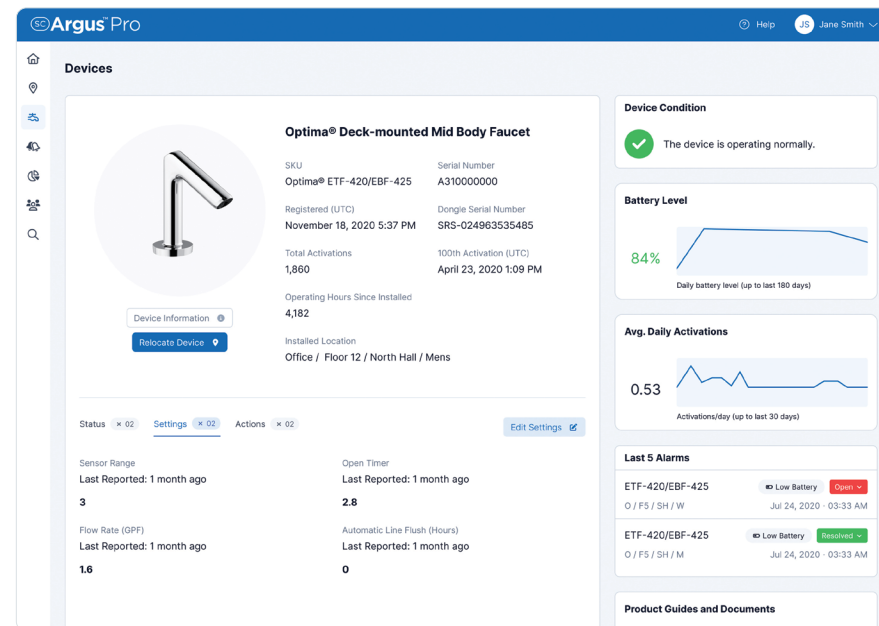
Alerts

- ✓ Receive alerts instantly through email or text notifications.
- ✓ Stay ahead of preventative maintenance with clear product alerts.
- ✓ Save time by knowing exactly which parts and tools are needed before you begin a job.
- ✓ Review alert timelines including when alerts occur, when they're acknowledged, and how long they take to resolve.
- ✓ Quickly assess system health with alert activity covering device errors, weak signal strength, and low battery.



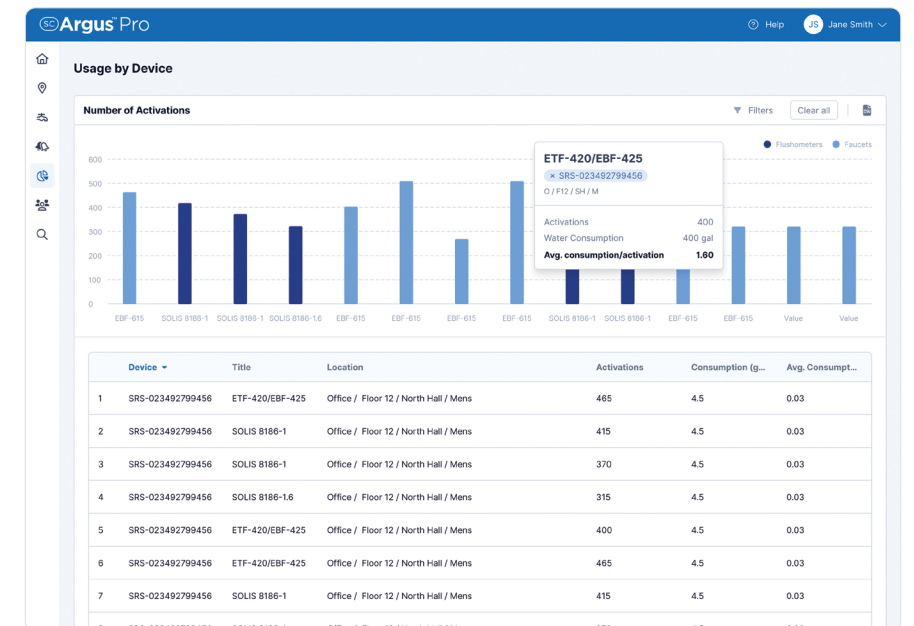
Devices

- ✓ Remotely monitor and manage devices with quick insight into status, condition, and battery levels.
- ✓ Track usage and performance through total activations and real-time diagnostics.
- ✓ Plan maintenance efficiently using a unified calendar of upcoming tasks.
- ✓ Keep organized records with notes on product locations and service history.
- ✓ Configure devices in bulk across multiple rooms or locations.
- ✓ Automate flush cycles and streamline repairs with scheduling options and built-in product documentation.



Reporting

- ✓ Export data quickly into visual, shareable digital reports.
- ✓ Create custom water usage reports by location, product type, and time frame.
- ✓ Track facility hygiene and health by gaining insights into handwashing habits.
- ✓ Document compliance with flushing routines that support water quality management by generating detailed line flush logs that capture time, date, and duration.
- ✓ Support sustainability certifications like LEED and WELL.
- ✓ View all installed devices and identify what to specify for future renovations.



Connect a wide range of Sloan products to SC Argus® Pro—including existing fixtures



Smart Flushometers

Choose from our lines of energy-efficient, sustainable flushometers like the SOLIS® line. Also available: SOLIS Smart RESS kits.



Smart Faucets

Connect with our expansive smart faucet offering including our BASYS® and Optima® lines. Also available: Optima Smart EBF/ETF Retrofit kits.



Smart Bottle Fillers

SC Argus Pro now supports remote monitoring and control of all DropSpot™ models via Wi-Fi without additional hardware needed.



SC Argus Pro

Our web-based, Software as a Service (SaaS) platform connects with all of your Sloan IoT devices for easy remote access and management.

Bring your facility into the future

To learn more or to schedule a demonstration of the SC Argus Pro smart restroom solution, contact your Sloan IoT Sales Specialist by emailing IoT.sales@sloan.com or visit us online sloan.com/sc-argus-pro.

SC Argus® Pro supported products



DRS100 Bottle Filler



DRS110 Bottle Filler with Single-level Cooler



DRS120 Bottle Filler with Bi-level Cooler



EAF-200 Hardwired Faucet*



EBF-85 SMT Battery Faucet
ETF-80 SMT Hardwired Faucet



EBF-187 SMT Battery Faucet
ETF-880 SMT Hardwired Faucet



EBF-415 SMT Battery Faucet
ETF-410 SMT Hardwired Faucet



EBF-425 SMT Battery Faucet
ETF-420 SMT Hardwired Faucet



EBF-615 SMT Battery Faucet
ETF-610 SMT Hardwired Faucet



EBF-650 SMT Battery Faucet
ETF-600 SMT Hardwired Faucet



EBF-815 SMT Battery Faucet
ETF-810 SMT Hardwired Faucet



EBF-825 SMT Battery Faucet
ETF-820 SMT Hardwired Faucet



EBF-850 SMT Battery Faucet
ETF-800 SMT Hardwired Faucet



EFX-250 Battery Faucet*
EFX-200 Hardwired Faucet*



EFX-275 Solar Faucet*



SOLIS® 8111 SMT Water Closet Flushometer



SOLIS 8186 SMT Urinal Flushometer



SOLIS RESS-C SMT Water Closet Flushometer Retrofit



SOLIS RESS-U SMT Urinal Flushometer Retrofit



*EAF-1025-SMT Smart Adapter
Adds smart capability to EAF-200, EFX-200, EFX-250, and EFX-275 faucets



SLOAN®

Water Connects Us®

World Headquarters

10500 Seymour Avenue
Franklin Park, IL 60131
U.S.A.

800.982.5839
sloan.com

©2026 Sloan Valve Company.
All Rights Reserved.

Follow Sloan

in /sloan-valve-company

f /sloan

@ @sloan_valve

X @sloan_valve

▶ @sloanvalve

📌 @sloanvalve