

SLOAN®

Full Line Sink Collection
Aesthetic appeal. Proven performance.



When aesthetics meets performance

Sloan offers sink designs that suit various settings, from luxury hotels to airport terminals, modern offices to contemporary hospitals. Sloan sinks are designed to match the aesthetics of our faucets, soap dispensers, and hand dryers. Sloan's collection of sinks provide a comprehensive solution to complete your commercial restroom.

Sustainable Sustainable building isn't a trend, it's the baseline. All Sloan sinks are designed to take full advantage of our water-saving sensor faucets.

Durable Many Sloan sinks are IAPMO-certified, passing a complete battery of tests to prove they can stand up to any commercial application.

Customizable Many Sloan sinks can be built with custom sizes, materials, colors, and configurations. Customize and view your design in real time with Sloan's Sink Configurator.



Signature Series Sinks

Fully integrated sink systems with limitless customization options, from sink materials, configuration, and fixture styles to finishes, accessories options, and enclosures types.



Designer Series™ Sinks

Highly customizable sink systems with impeccable craftsmanship for upscale applications.



Performance Series Sinks

Pre-formed sink systems in select configurations ready for cost-conscious projects.



Lavatory Sinks

Reliable and economical vitreous china sinks for wall-mount or countertop installations.



Stainless Steel Sinks

Durable, touch-free sink stations for environments where hygiene is paramount.

Signature Series FLITE-DEC™ Integrated Sink System FD-84000 in Corian® Carbon Aggregate with Brushed Stainless fixtures with laminated vertical cabinet style enclosure in Wilsonart® Snow White Mist. Sloan® MF Angle Frame Mirrors in Polished Chrome.



Signature Series FLITE-DEC Integrated Sink System FD-84000 in Silestone® Blanco Maple with Polished Chrome fixtures and bag hooks.

FLITE-DEC™ Integrated Sink System

Built for heavy use. Designed for lasting impact.

FLITE-DEC is Sloan's latest evolution in integrated sink systems, created for the most demanding public environments. Faucet, soap dispenser, and hand dryer are mounted directly into the basin itself, keeping water contained, minimizing mess, and ensuring a safer, more efficient user experience.





Available in solid surface or quartz, FLITE-DEC delivers both strength and style for transportation, entertainment, and hospitality spaces. Designed around durability but crafted with architectural appeal, it gives specifiers the freedom to design boldly while trusting in Sloan performance.

Engineered for busy restrooms



Signature Series FLITE-DEC Integrated Sink System FD-84000 in Silestone® Blanco Maple with Polished Chrome fixtures.

FLITE-DEC™ features

-  **IN-BASIN INTEGRATION**
Soap, rinse, and dry all in the basin, leaving water in the basin and off restroom floors.
-  **REPLETE SOAP RESERVOIR**
Never spill or waste soap with the closed top-fill soap system allowing for 10K+ hand washes on a full tank.
-  **CUSTOMIZABLE DESIGN**
Endless deck material options, sink configurations, and integrations like bag hooks and changing tables.
-  **OPTIMIZED FOR HEAVY TRAFFIC**
Choose your way to maintain internal components, either from front or behind-the-sink chase access.



Upkeep and access

Touch-free operation promotes hygiene and water savings, while above-deck soap refilling makes servicing faster and easier. With a 2.85-gallon top-fill closed soap system, refill frequency is minimized, reducing downtime and improving staff efficiency.

Access important internal components in the way that best suits your facility's needs. Choose from traditional front access, or seamlessly maintain parts behind the sink with chase access. FLITE-DEC allows you the flexibility of choice.



Front access



Chase access



Signature Series AER-DEC Integrated Sink System AD-84000 Rush Street in two-tone Silestone® Concrete Pulse and Silestone Et Statuario basins with Rush Street fixtures in Graphite and laminated vertical cabinet style enclosure with Wilsonart® Fawn Cypress Sloan® MF Angle Frame Mirrors in Graphite.

AER-DEC® Integrated Sink System

Soap, rinse, dry—all three steps, without taking any.

The ultimate innovation for any high-end restroom, the AER-DEC combines soap dispenser, faucet, hand dryer, and sink basin into one beautiful, touch-free, hygienic, highly efficient system.

Visitors can now soap, rinse, and dry their hands without reaching for paper towels or walking to a separate dryer—so your stylish restrooms stay neater and require less cleaning.

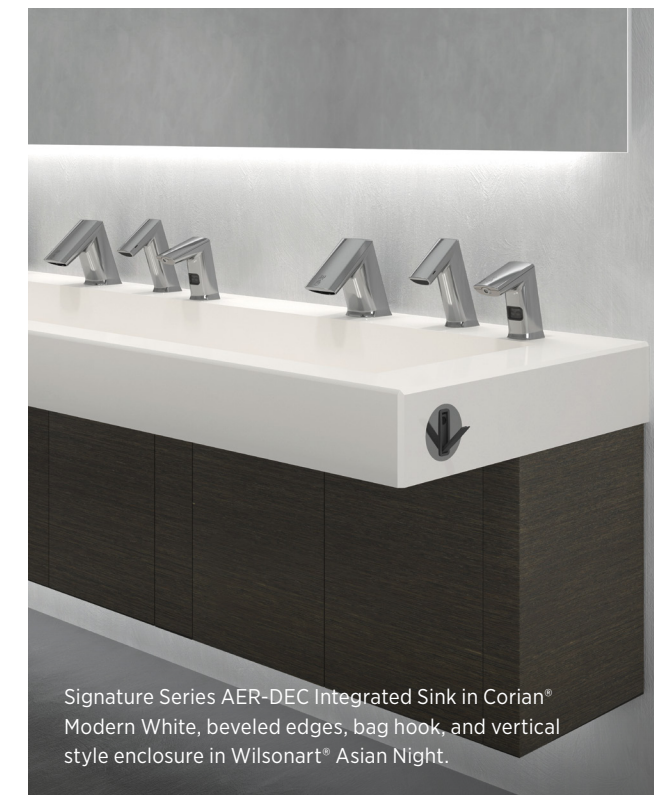
The AER-DEC integrates the finest concepts in commercial sinks into a cutting-edge installation with a sleek, contemporary design that not only looks fantastic but also performs terrifically in any setting.

Integrated to perfection

AirBasin brings innovation to airflow






Each component of the AER-DEC is designed to create a fully integrated system. The key to that integration is the patented AirBasin that redirects air and water flow to eliminate backsplash and updraft.

The touch-free, hygienic design of the AER-DEC saves water, reduces energy consumption, and reduces the need for paper towels. It's good for the environment. Good for the user. Good for business.



Signature Series AER-DEC Integrated Sink in Corian® Modern White, beveled edges, bag hook, and vertical style enclosure in Wilsonart® Asian Night.

AER-DEC® features

-  **SINK DECK**
Keeping all three elements of the hand wash process on the sink deck reduces slip and fall risk from water dripping on the floor.
-  **FAUCETS, SOAP DISPENSER, AND HAND DRYERS**
Active Infrared sensing for hygienic touch-free operation.
-  **SOAP DISPENSER**
Dispenses a pre-measured amount of soap to reduce soap waste.
-  **FAUCETS**
Battery, plug-in, hardwired, or power-harvesting options (solar or turbine) for energy efficient flexibility.
-  **HAND DRYERS**
HEPA filter removes 99.97% of dust, mold, bacteria, and airborne particles as small as 0.3 microns. Adjustable dry speed and heat settings for sound, speed, and temperature comfort.



Designer Series Gradient Sink DSG-82000 in Corian® Carbon Aggregate with BASYS® EFX-250 Faucet with engraving and Sloan® ESD-500 Soap Dispenser in Polished Chrome. Sloan MF Angle Frame Mirrors in Polished Chrome.

Designer Series Sinks

Style without limits

For upscale settings where your design needs to make a statement, Sloan's Designer Series offers an endless array of designs, colors, finishes, and functionality.

As different as they may be in execution, all Designer Series Sinks are visually striking, impeccably crafted, and remarkably durable. They bring a clean and modern appeal to restrooms of any size in hotels, restaurants, office suites, and high-end retail establishments.

All Designer Series Sinks are available in Corian, Quartz, Caesarstone®, Cambria®, or Silestone®, with more than 100 color options to fit any design vision. After selecting a sink color, enhance that vision by pairing the design with any of Sloan's faucets and soap dispensers.

Make a statement

The Designer Series™ is all about customization, and it starts with shape. Bold, innovative shapes tell visitors they are not in just any restroom. If your contemporary designs push the boundaries of convention, you can customize a Designer Series Sink to make your vision a reality.



Drain finishes

Match your drain to your fixtures with the DS-57A ProDrain Grid Strainer, compatible with Designer Series Sinks (excluding DSCT Series) and available in Polished Chrome, Graphite, Brushed Stainless, Brushed Nickel, and Polished Brass.

Fixture finishes

Many faucets and soap dispensers are available in our unique finishes.



Gradient DSG Series



- Available in 1, 2, 3, and 4+ stations
- Faucet and soap dispenser options available
- See page 12 for mounting options

Shown with Combination ESD-501 (BASYS® EFX-250 Faucet and Sloan® ESD-500 Soap Dispenser)

Counter Top DSCT Series



- Available in 1, 2, 3, and 4+ stations
- Faucet and soap dispenser options available
- See page 12 for mounting options

Shown with Combination ESD-601 (Optima® EBF-615 Faucet and Sloan ESD-600 Soap Dispenser)

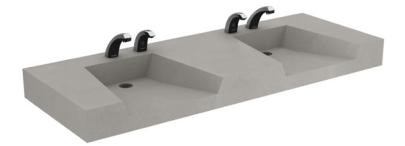
Weir Deck DSWD Series



- Available in 1, 2, 3, and 4+ stations
- Faucet and soap dispenser options available
- See page 12 for mounting options

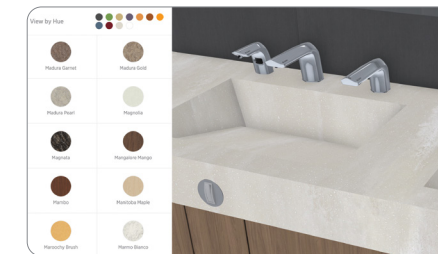
Shown with Combination ESD-411 (Optima EBF-410 Faucet and Sloan ESD-410 Soap Dispenser)

Open Front DSOF Series



- Available in 1, 2, 3, and 4+ stations
- Faucet and soap dispenser options available
- See page 12 for mounting options

Shown with Combination ESD-801 (Optima EBF-85 Faucet and Sloan ESD-800 Soap Dispenser)



Sloan Sink Configurator

Customize and view your design in real time with Sloan's Sink Configurator.

Create your custom sink at configurator.sloan.com



Choose from 100+ color options in solid surface and quartz.

There is no limit to the ways you can customize your Designer Series Sink.

See pages 10-12 for more details.



Signature Series AER-DEC® Integrated Sink System AD-81000 Clark Street® in Silestone® Cala Blue with Clark Street fixtures in Graphite and laminated vertical cabinet style enclosure in Wilsonart® White.

Design your sink

Design a sink that matches your need

From configuration to color, your customization options for **Signature Series** and **Designer Series™ Sinks** are limited only by your imagination.

You can specify custom widths, side and backsplashes, or various mounting options. You can include a hand dryer (AER-DEC and FLITE-DEC™ only), faucet, and soap dispenser that can be individual per station or be shared between stations. LED lights within the basin can even change color at the touch of a remote.

We believe sinks should enhance your restroom design vision. That's why you can choose an endless assortment of design options for the Signature Series and Designer Series sinks from size and configuration to material and color.

Customize and view your design in real time with Sloan's Sink Configurator. When you've finished your design you can download renderings, pricing and configuration details, rough-in and line drawings, and installation instructions.

Create your custom sink at configurator.sloan.com

Materials and colors

The Signature Series and Designer Series™ basin and enclosures are available in hundreds of material options from industry leading manufacturing partners including:

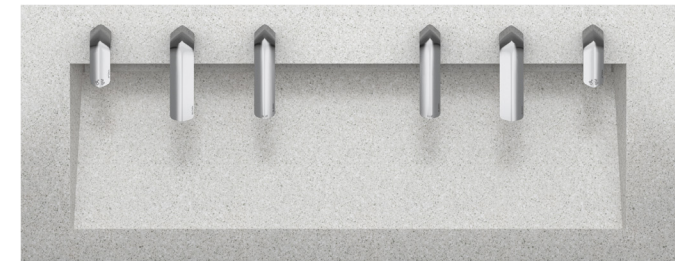


Choose a configuration

Basins can be centered or offset to accommodate traffic flow or space restrictions. All basins can be continuous trough style or individual basins, except for FLITE-DEC™ Integrated Sink System that is only available in through style. Signature Series and Designer Series Sinks meet ADA requirements if properly installed. See page 12 for mounting options.



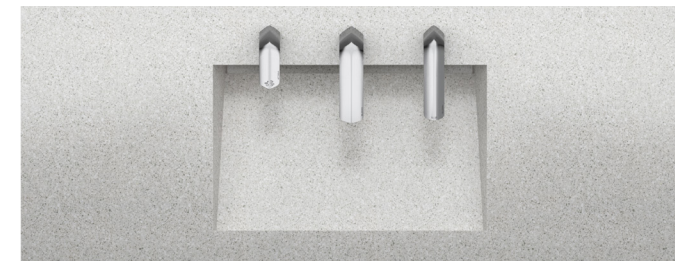
Individual basins



Continuous trough basin



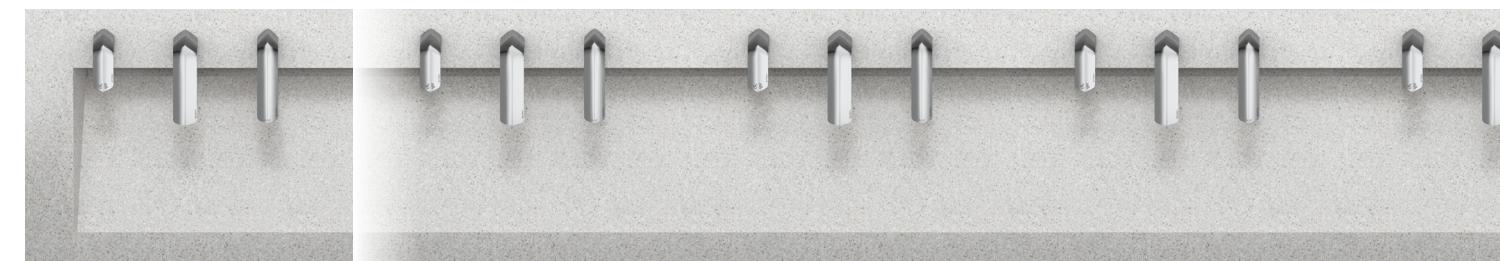
Single side counter extension



Dual side counter extensions

Choose a width and mounting type

Basins can be ordered in custom widths or in standard increments of 30 inches, up to 240 inches. The sink can be mounted in a variety of ways to fit snugly into an alcove, have a wall on either side, or mount directly to an open wall with open side. Build your restroom around the your sink or the sink around your existing restroom.



30"

60"

90"

120"

Custom

Design Options

Enclosure and mounting options



Vertical cabinet with laminated doors



Angled or vertical stainless steel enclosure



Angle brackets

Additional options



Trash chute and paper towel holders



Multiple sink heights



LED lighting in sink basin



Bag hooks and beveled or rounded sink edges



Two tone sink basins



Baby changing stations

Fabulous fixture finishes

Our wide selection of fixtures are available in our unique finishes. Now also available for our sink drains.



Signature Series FLITE-DEC™ Integrated Sink System FD-81200 with Polished Chrome fixtures featuring bag hooks, trash chutes, and custom Sloan Inset LED Mirrors.

Your vision. Your sinks.

Create a one-of-a-kind sink with limitless possibilities

Customized sink solutions offer architects and designers a tailored and versatile means to seamlessly incorporate hand hygiene into a space's overall aesthetic while simultaneously elevating the space's functionality. Our sinks can be created from virtually any substrate, all the while complying to all regulatory codes, as well as meeting crucial building certifications.

Contact your Sloan rep to create a one-of-a-kind sink for your project.



Signature Series AER-DEC® Integrated Sink System AD-85000 BASYS® in Corian® Dove with Polished Chrome BASYS fixtures and angled stainless steel enclosure, featuring seamed counter spaces.

Sink Seaming Services

Save time and effort on your next restroom build with sink seaming from Sloan. Sloan's approved professionals provide the high-quality seaming service you need to complete your vision worry-free, scheduled to fit your project timeline.

Seaming Service

- Ideal for projects that require seaming service: Corian® sinks over 120" long or quartz sinks over 119" long
- Seaming service provided by trained Seaming Service Technicians
- Hassle-free scheduling of seaming services



Signature Series AER-DEC® Integrated Sink System AD-85000 BASYS® in quartz with Polished Chrome BASYS fixtures and angled stainless steel enclosure, featuring professional seaming.

Your project done right from the start

Ensuring your sinks look beautiful and professional

We are your go-to professional resource for hassle-free sink installation oversight and seaming service. Simplify your most complex Sloan sink installations with the help of trusted Sloan Sink Technicians. Our team can support you through your installation process right down to the final seam.

Sink Start Up Services

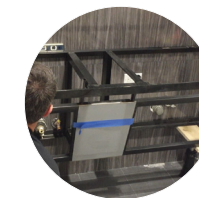
Our Sloan Start Up Technicians are here to guide you through the sink installation process, making sure that it is hassle-free and void of any installation errors or unforeseen product malfunction.

- Ideal projects that may benefit from start up service: large, complex, multi-sink projects
- 2-3 site visits for accurate sink installation and guidance on best practices scheduled at your convenience
- Product order delivery confirmation, order accuracy verification, and solutions for any component damage
- Sink installation inspection provided by highly qualified Sloan Application Engineer



1. Our technician performs a site visit

We'll perform a job site walk-through and provide a thorough review of wall construction and electrical rough-ins, as well as assess the current water and drainage system.



2. The technician oversees the installation process

Sloan technician will confirm, guide, answer questions, resolve issues. They will not perform the installation or complete any physical work.



3. Project sign-off and quality control

Our technician verifies that all components are installed as expected and functioning as intended.



Performance Series AER-DEC in SloanStone Integrated Sink System ELAD-82000 BASYS in SloanStone Solid Surface Matrix Dusk with BASYS style fixtures in Polished Chrome and Sloan® ML 2 Inset LED Mirror. SOLIS® 8111 Sensor Flushometer with ST-2459 Wall-mounted Water Closet.

Engineered for busy restrooms

AER-DEC® in SloanStone® features



TOUCH-FREE CONVENIENCE

Integrated sensor-operated faucet, soap dispenser, and hand dryer with a built-in air dam ensures a sanitary, splash-free experience.



DURABILITY BY DESIGN

SloanStone pre-formed solid surface decks are non-porous, resist impact, prevent grime buildup, are repairable, and withstand the demands of high-traffic environments.



MAKE IT UNIQUE

Match any aesthetic with 25 sink deck color options, in 1-4 station trough styles, paired with BASYS®, Clark Street®, and Rush Street® fixtures in 5 distinct finishes.



Performance Series AER-DEC in SloanStone Integrated Sink System ELAD-83000 Rush Street in SloanStone Solid Surface Cement with Rush Street style fixtures in Graphite and Sloan® MF Thin Frame Mirror in Graphite.

Performance Series AER-DEC® in SloanStone®

Form and function, perfectly integrated

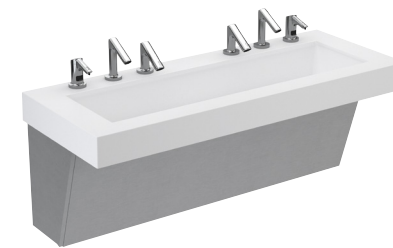
The AER-DEC Integrated Sink System is now available in SloanStone Solid Surface—delivering the same innovative, industry-leading performance with enhanced durability for high-traffic environments. Its seamless construction, rounded corners, and vandal-resistant design make it ideal for busy public spaces.

- Sink Sizes: 1-, 2-, 3-, or 4-Station Continuous Trough
- Material: SloanStone Solid Surface available in 25 colors
- Enclosure: Angled Stainless Steel
- Fixtures: BASYS®, Clark Street®, or Rush Street®
- Built in air-dam system



Performance Series AER-DEC in SloanStone Integrated Sink System ELAD-81000 BASYS in SloanStone Solid Surface Matrix Dusk with BASYS style fixtures in Polished Brass and Sloan® ML 4 Edge LED Mirror.

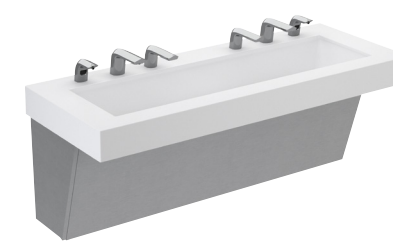
ELAD Rush Street



- Available in 1, 2, 3, and 4 stations
- Integrated Rush Street faucet, soap dispenser, and hand dryer
- Integrated angled stainless enclosure
- Available in SloanStone Solid Surface

Shown with angled stainless enclosure and Rush Street fixtures in Polished Chrome

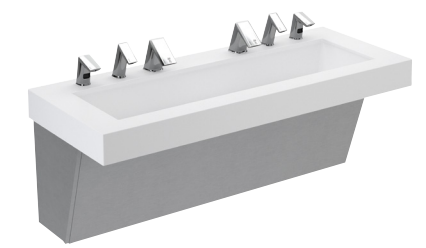
ELAD Clark Street



- Available in 1, 2, 3, and 4 stations
- Integrated Clark Street faucet, soap dispenser, and hand dryer
- Integrated angled stainless enclosure
- Available in SloanStone Solid Surface

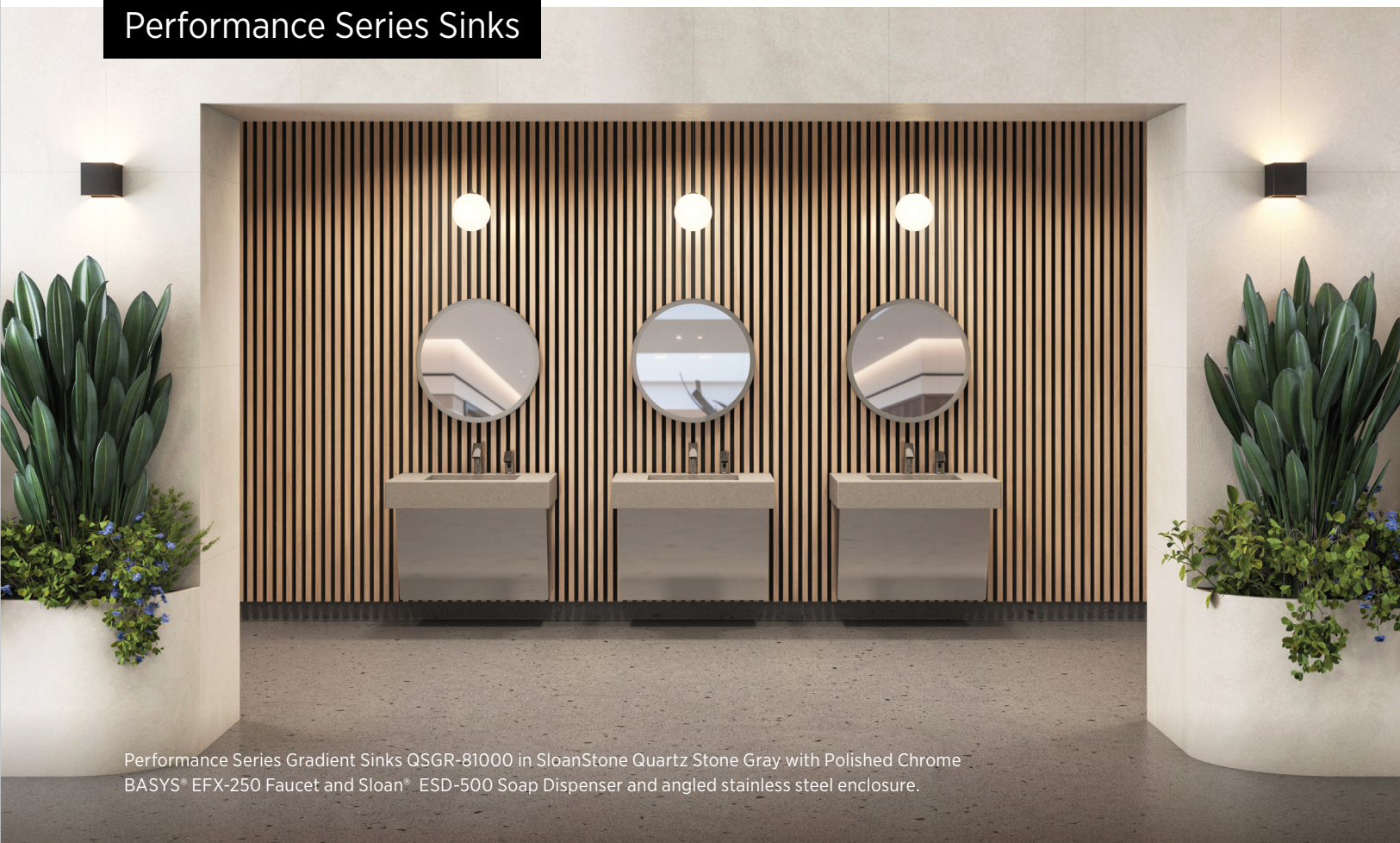
Shown with angled stainless enclosure and Clark Street fixtures in Polished Chrome

ELAD BASYS



- Available in 1, 2, 3, and 4 stations
- Integrated BASYS faucet, soap dispenser, and hand dryer
- Integrated angled stainless enclosure
- Available in SloanStone Solid Surface

Shown with angled stainless enclosure and BASYS fixtures in Polished Chrome



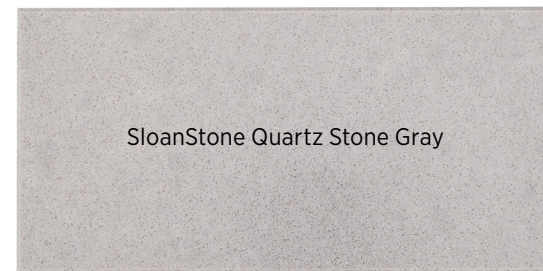
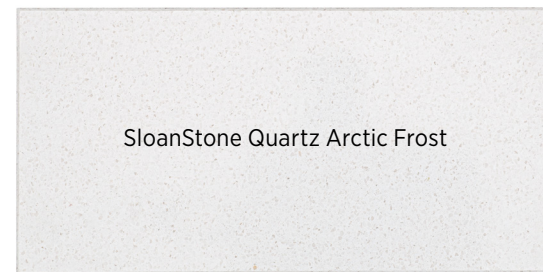
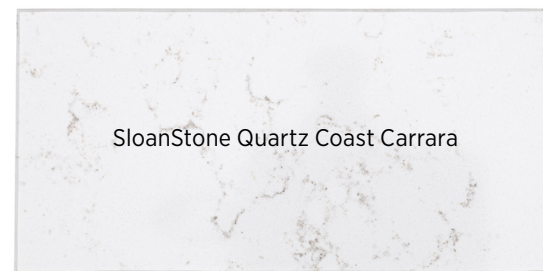
Performance Series Gradient Sinks QSGR-81000 in SloanStone Quartz Stone Gray with Polished Chrome BASYS® EFX-250 Faucet and Sloan® ESD-500 Soap Dispenser and angled stainless steel enclosure.

Performance Series Sinks in SloanStone® Quartz

Engineered to perform

Our engineered SloanStone Quartz sink decks offer the perfect blend of beauty, durability, and cost-effectiveness. These pre-formed decks feature a seamless, non-porous construction that makes for an extremely scratch and stain-resistant, hygienic, and easy-to-maintain surface. With three distinct colors choices, you can add style and the industry-leading performance of SloanStone Quartz to your next commercial project.

- Available for SloanStone Arrowhead and Gradient style sinks
- Industry-leading minimum of 85% quartz per deck
- Stain, scratch, abrasion, and impact resistant
- Heat and rapid temperature fluctuation resistant
- Cost-effective alternative to solid surface and fabricated quartz
- GreenGuard Gold Certified



Two styles

SloanStone® Arrowhead is a unique and modern design that comes to a slight point with an open front edge. SloanStone Gradient is a contemporary design that brings a strong visual presence with a clean form and dramatically angled basin.



Drain finishes

Match your drain to your fixtures with the DS-57A ProDrain Grid Strainer, compatible with SloanStone Quartz QSA and QSGR Sink Models and available in Graphite, Brushed Stainless, Brushed Nickel, and Polished Brass.

Fixture finishes

Many faucets and soap dispensers are available in our unique finishes.



Polished Chrome

Graphite



Brushed Stainless

Brushed Nickel



Polished Brass

Arrowhead QSA Series



- Available in 1 and 2 stations
- Faucet and soap dispenser options available
- Angled bracket or angled stainless enclosure mounting options
- Also available in SloanStone Solid Surface

Shown with angled stainless enclosure and Combination ESD-411 (Clark Street® EBF-415 Faucet and Sloan® ESD-410 Soap Dispenser)

Gradient QSGR Series



- Available in 1 and 2 stations
- Faucet and soap dispenser options available
- Angled bracket or angled stainless enclosure mounting options
- Also available in SloanStone Solid Surface

Shown with angled stainless enclosure and Combination ESD-421 (Rush Street® EBF-425 Faucet and Sloan ESD-420 Soap Dispenser)



Performance Series Arrowhead Sink QSA-82000 in SloanStone Quartz Arctic Frost and angled stainless steel enclosure with Combination ESD-801 (Optima® EBF-85 Faucet and Sloan ESD-800 Soap Dispenser).



Performance Series Deluxe Lavatory Countertop Sink ELC-82000 in SloanStone Solid Surface Fog with integrated stainless steel enclosure shown with Optima® EAF-275-ISM Faucet in Brushed Stainless.

Performance Series Sinks in SloanStone® Solid Surface



Drain finishes

Match your drain to your fixtures with the DS-57A ProDrain Grid Strainer, compatible with Performance Series ELGR, ELA, ELWF and ELRF sink models and available in Polished Chrome, Graphite, Brushed Stainless, Brushed Nickel, and Polished Brass.

Low-maintenance sinks for high-traffic settings

Schools. Office buildings. Airports. Stadiums. Wherever lots of people get together, restrooms have to be ultra-rugged and easy to maintain.

SloanStone Solid Surface Sinks use a pre-formed, non-porous solid surface material that eliminates all adhesives and sealants for tough durability and easy repairs.

SloanStone Solid Surface Sinks are built with these features:

- **Easy-access components.** All serviceable components, including electronics, can be easily accessed. Some models can even be accessed above deck.
- **Vandal resistance.** Each design provides a level of vandal resistance, from easily cleaned surfaces to integrated faucets and locked access to components.

Pair many SloanStone Solid Surface Sinks with Sloan faucets and soap dispensers. Select models available in finishes.

See all fourteen different designs and up to 25 color options at sloan.com/sloanstone-solid-surface

Arrowhead

ELA Series



- Available in 1, 2, 3, and 4 stations
- Faucet and soap dispenser options available
- Angle bracket or angled stainless enclosure mounting options
- Also available in SloanStone® Quartz

Shown with Combination ESD-501 (BASYS® EFX-250 Faucet and Sloan® ESD-500 Soap Dispenser)

Gradient

ELGR Series



- Available in 1, 2, 3, and 4 stations
- Faucet and soap dispenser options available
- Angle bracket or angled stainless enclosure mounting options
- Also available in SloanStone Quartz

Shown with Combination ESD-1501 (Optima® EAF-150 Faucet and Sloan ESD-1500 Soap Dispenser)

Round Front

ELRF Series

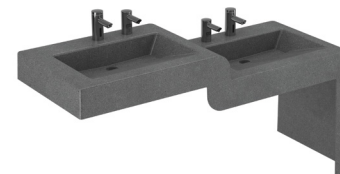


- Available in 1, 2, 3, and 4 stations
- Faucet and soap dispenser options available
- Angle bracket or angled stainless enclosure mounting options

Shown with Combination ESD-1501 (Optima EAF-150 Faucet and Sloan ESD-1500 Soap Dispenser)

Waterfall

ELWF Series

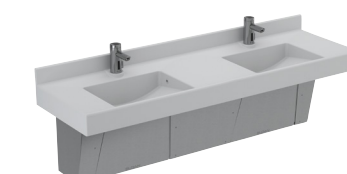


- Available in 2, 3, and 4 stations
- Faucet and soap dispenser options available
- Angle bracket mounting option

Shown with Combination ESD-2001 (Optima EAF-275 Faucet and Sloan ESD-2000 Soap Dispenser)

Electronic Lavatory Countertop

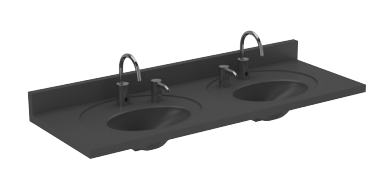
ELC 80000 Series



- Available in 1, 2, and 3 stations
- Faucet options available
- Integrated angled stainless enclosure

Shown with Optima EAF-200 Faucet

ELC 40000/70000 Series



- Available in 1, 2, 3, and 4 stations
- Faucet and soap dispenser options available
- Angle bracket mounting option

ELC-40000 shown with Combination ESD-701 (Optima EAF-750 Faucet and Sloan ESD-700 Soap Dispenser)

Electronic Washstation

EW 40000, 60000, 70000 Series



- Available in 2 and 3 stations
- Integrated soap dispenser option available
- Integrated plastic covered enclosure

EW-70000 shown with integrated faucet and soap dispenser

Electronic Lavatory System

ELS 40000, 60000, 70000 Series



- Available in 1, 2, and 3 stations
- Faucet and soap dispenser options available
- Integrated plastic covered enclosure

ELS-70000 shown with Optima EAF-300 Faucet and Sloan ESD-600 Soap Dispenser

Electronic Washstation Fountain

EWf Series



- Available in 2, 3, and 4 stations
- Integrated soap dispenser option available
- Integrated solid surface covered enclosure

Shown with integrated faucet

Stainless Steel Sinks

Hygienic, touch-free, and tough

Built from 14 gauge type 304 stainless steel, these sinks endure the harshest working environments with minimal maintenance. And for ultimate hygiene, touch-free faucets and soap dispensers combine with a sink design that's ideal for complete washdowns.

Our stainless sink systems also include:

- Pre-plumbing and pre-assembly for easy installation
- Lift-out front panels for easy maintenance
- Sound-softening inside panels

Sloan stainless sink systems are available in 1, 2, and 3 station configurations to accommodate every setting.



Deluxe Stainless Steel Sink ESS-3300 with integrated gooseneck surgical bend faucet and knee-activated soap dispenser.

Scrub Sink

ESS 2000 Series



- Available in 1, 2, and 3 stations
- Integrated faucet
- Includes integrated stainless enclosure

Handwashing Sink

EHS-1000



- Available in 1 station
 - Faucet options available
 - Includes integrated stainless enclosure
- Shown with Standard SF-2200 Faucet*

Deluxe Scrub Sink

ESS 3000 Series



- Available in 1, 2, and 3 stations
- Integrated faucet and soap dispenser
- With knee-activated soap dispenser
- Includes integrated stainless enclosure

Lavatory Sinks

Timeless vitreous

Sloan vitreous china sinks are available for wall-hung or countertop installation. They are perfect for any application—from executive restrooms to schools, entertainment venues, transportation centers, or government buildings. Options include a backsplash, wheelchair access, and 4", 8", or single-hole centerset punching. You can also add a ceramic shroud under the sink (select models) for a sleek, clean appearance.

All models are IAPMO tested and certified. Add our revolutionary SloanTec® Glaze to your sink to help keep it clean and looking great. Pair your lavatory sink with a Sloan faucet as well as matching soap dispenser (for 20" × 18" ledgeback or undermount lavatories only).



Ledgeback Wall-hung Lavatory SS-3106 with BASYS® EFX-177 Faucet and Sloan® MF Frame Mirror in Polished Chrome.

Wall-hung lavatories

Ledgeback
20" × 18" | 508 mm × 463 mm



SS-3106* Single Hole
SS-3006* 4" Centerset
SS-3806 8" Centerset

Optional SS-27-A Shroud available

**LH & RH soap holes also*

Ledgeback
21" × 20" | 533 mm × 508 mm



SS-3165 Single Hole
SS-3065 4" Centerset

Optional SS-27-A Shroud available

With 4" backsplash
20" × 18" | 508 mm × 457 mm



SS-3103 Single Hole
SS-3003 4" Centerset
SS-3803 8" Centerset

Undermount lavatories

22" × 16" | 559 mm × 406 mm



SS-3021

20" × 18" | 508 mm × 457 mm



SS-3001

Drop-in lavatory

20" × 17" | 508 mm × 432 mm



SS-3802 8" Centerset



Front cover: Signature Series FLITE-DEC™ Integrated Sink System FD-84000 in Corian® Ash Concrete with Graphite fixtures and bag hooks with laminated vertical cabinet style enclosure in Wilsonart® Ruskin Oak. Sloan MF Angle Frame Mirrors in Graphite.

Back cover: Performance Series Arrowhead Sink QSA-81000 in SloanStone® Quartz Coast Carrara with angled brackets and Optima® EBF-415 Faucet and Sloan ESD-410 Soap Dispenser in Graphite.

World Headquarters

10500 Seymour Avenue
Franklin Park, IL 60131
U.S.A.

800.982.5839
sloan.com

©2025 Sloan Valve Company.
All Rights Reserved.

Follow Sloan

in /sloan-valve-company

f /sloanvalvecompany

@ @sloan

▶ @sloanvalve

X @sloan_valve

p /sloanvalve