

SLOAN®

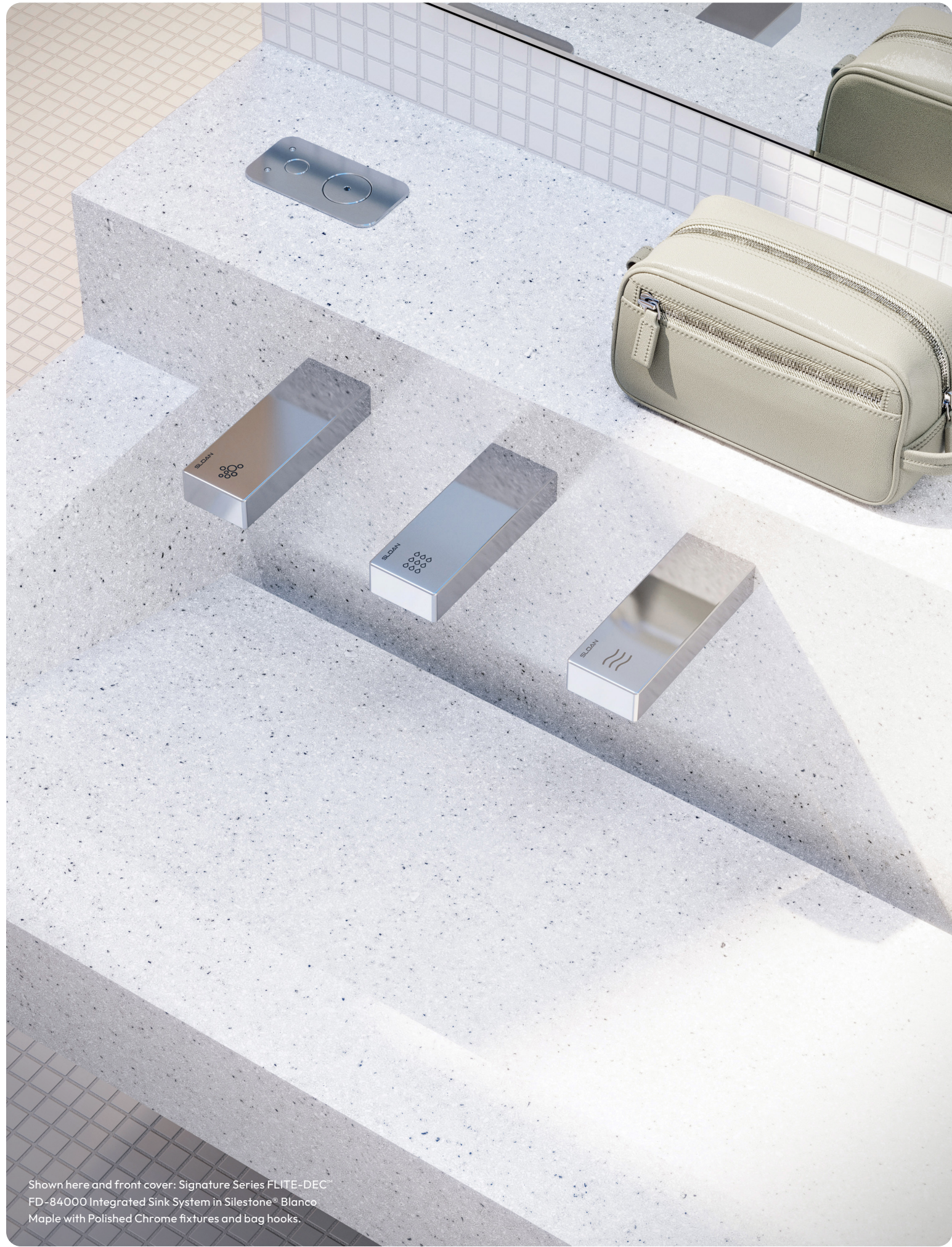
FLITE-DEC™ Integrated Sink System



Built for heavy use. Designed for lasting impact.

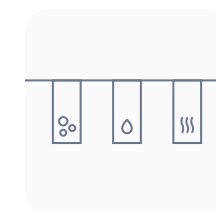
FLITE-DEC™ is Sloan's latest evolution in integrated sink systems, created for the most demanding public environments. Faucet, soap dispenser, and hand dryer are mounted directly into the basin itself, keeping water contained, minimizing mess, and ensuring a safer, more efficient user experience.

Available in solid surface or quartz, FLITE-DEC delivers both strength and style for transportation, entertainment, and hospitality spaces. Designed around durability but crafted with architectural appeal, it gives specifiers the freedom to design boldly while trusting in Sloan performance.



Shown here and front cover: Signature Series FLITE-DEC™
FD-84000 Integrated Sink System in Silestone® Blanco
Maple with Polished Chrome fixtures and bag hooks.

The FLITE-DEC difference



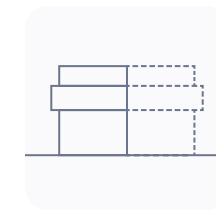
In-basin integration

Soap, rinse, and dry all in the basin, leaving water in the deck and off restroom floors.



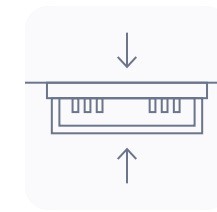
Replete soap reservoir

Never spill or waste soap with the closed top-fill soap system allowing for 10K+ hand washes on a full tank.



Customizable design

Endless deck material options, sink configurations, and integrations like bag hooks and changing tables.



Optimized for heavy traffic

Choose your way to maintain internal components, either from front or behind-the-sink chase access.

CUSTOMIZATION

Design without compromise

Every restroom has unique requirements. With FLITE-DEC™, you have the flexibility to tailor your sink system to the vision of your space without compromising performance. From materials and finishes to enclosures and configurations, every FLITE-DEC is built to order.



Signature Series FLITE-DEC Integrated Sink System in Silestone® Et Calacatta with Polished Chrome fixtures and bag hooks with laminated vertical cabinet style enclosure in Wilsonart® Asian Night. Sloan MF Angle Frame Mirrors in Polished Chrome.

Materials and configuration

Choose solid surface for a seamless, expansive look or quartz for added depth and resilience. Both are engineered to endure high-traffic use and can be configured as individual or continuous style basins. Add the final touch of hospitality with thoughtfully integrated bag hooks, trash chutes, and baby changing stations.

Enclosures

Select from standard stainless steel or customize with an endless assortment of laminate enclosure options to complement your restroom architecture.

Sloan Mirrors Complete the restroom with Sloan dependable mirrors in LED lit or Framed mirror styles. Custom mirror options are available for unique, one-of-a-kind project solutions. sloan.com/mirrors



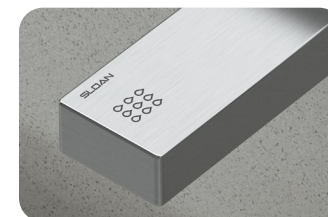
Signature Series FLITE-DEC™ Integrated Sink System in Corian® Ash Concrete with Graphite fixtures and bag hooks with laminated vertical cabinet style enclosure in Wilsonart® Ruskin Oak. Sloan MF Angle Frame Mirrors in Graphite.

Strength and beauty

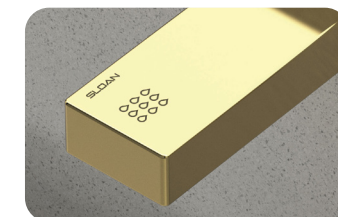
Fixtures can withstand up to 150 lbs of downward force, making them the perfect solution for high-traffic environments that may experience vandalism while looking effortless in our five finishes: Graphite, Polished Chrome, Brushed Stainless, Polished Brass, and Brushed Nickel.



Polished Chrome



Brushed Stainless



Polished Brass



Brushed Nickel



Signature Series FLITE-DEC Integrated Sink System in Corian® Quartz Calacatta Villa with Polished Chrome fixtures, bag hooks, and stainless custom ADA angled enclosure.

PERFORMANCE & RESPONSIBILITY

Engineered for the world's busiest restrooms

FLITE-DEC™ is designed to thrive in the world's busiest restrooms. With vandal-resistant fixtures, solid surface or quartz basins, and Sloan's innovative air-dam, water stays in the sink, keeping floors dry and maintenance low. Touch-free operation promotes hygiene and water savings, while above-deck soap refilling makes servicing faster and easier. With a 2.85-gallon top-fill closed soap system, refill frequency is minimized, reducing downtime and improving staff efficiency.



Design your FLITE-DEC Customize your sink design in real time and download renderings, get pricing, configuration details, installation instructions, and more. configurator.sloan.com



Closed soap system

FLITE-DEC's unique closed system ensures there are never soap replenishment issues. Simply top-off the reservoir from an easy-access port.

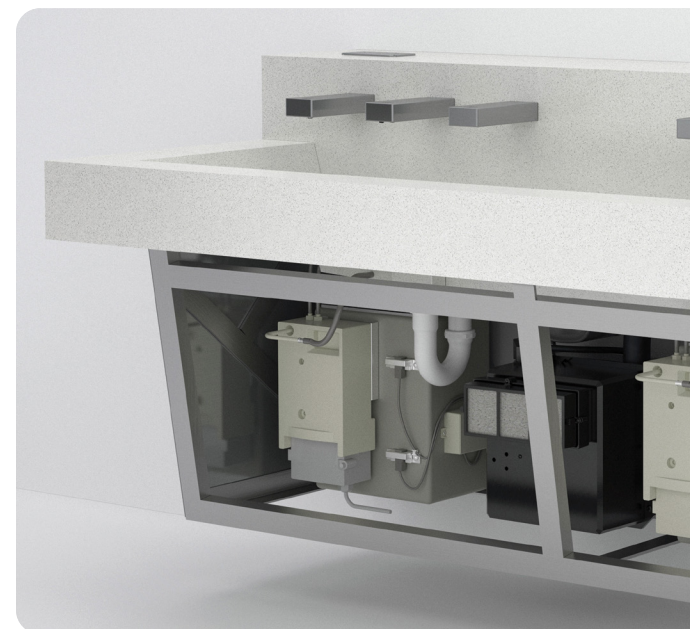


Trash chute and stainless enclosure

Create a discrete space for waste with easy-to-clean trash chute openings that provide maintenance staff with quick and secure access to the waste receptacles.

Access options

Access important internal components in the way the best suits your facility's needs. Choose from traditional front access, or seamlessly maintain parts behind the sink with chase access. FLITE-DEC™ allows you the flexibility of choice.



Front enclosure access



Chase access



Signature Series FLITE-DEC FD-84000 Integrated Sink System in Corian® Carbon Aggregate with Brushed Stainless fixtures with laminated vertical cabinet style enclosure in Wilsonart® Snow White Mist. Sloan MF Angle Frame Mirrors in Polished Chrome.

Bring FLITE-DEC™ to your next project

Give your high-traffic spaces a sink system designed for today's demands and tomorrow's durability. Whether for an airport terminal, stadium concourse, or hospitality venue, FLITE-DEC delivers lasting performance in a sleek, customizable design.

- ✔ Visit sloan.com/flite-dec
- ✔ Explore the Sloan Sink Configurator
- ✔ Contact your Sloan representative

Design your FLITE-DEC Customize your sink design in real time and download renderings, get pricing, configuration details, installation instructions, and more.

configurator.sloan.com



Sloan World Headquarters 10500 Seymour Avenue, Franklin Park, IL 60131 U.S.A. 800.982.5839 sloan.com

[in/sloan-valve-company](https://www.linkedin.com/company/sloan-valve-company) [f/sloanvalvecompany](https://www.facebook.com/sloanvalvecompany) [@sloan_valve](https://www.instagram.com/sloan_valve) [X@sloan_valve](https://x.com/sloan_valve) [@sloanvalve](https://www.youtube.com/sloanvalve) [p/sloan_valve](https://www.pinterest.com/sloan_valve)

©2025 Sloan Valve Company. All Rights Reserved.