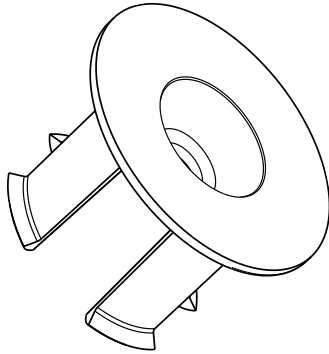


## INSTALLATION INSTRUCTIONS FOR H-1015-A FLOW CONTROL KITS



**H-1015-A**

### NOTE

**THIS FLOW CONTROL IS NOT TO BE FITTED TO VALVES WITH THE FOLLOWING:**

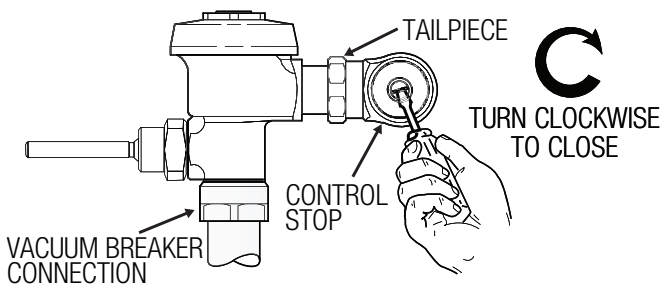
1. GROUND JOINT TAILS (GJ)
2. ADJUSTABLE GROUND JOINT TAILS (XD) or (ADJ/GJ)
3. TECK TAILS (XDT)

### LIMITED WARRANTY

Unless otherwise noted, Sloan Valve Company warrants this product, manufactured and sold for commercial or industrial uses, to be free from defect in material and workmanship for a period of three (3) years (one (1) year for special finishes, SF faucets, PWT electronics and 30 days for PWT software) from date of first purchase. During this period, Sloan Valve Company will, at its option, repair, replace, or refund the purchase price of any product which fails to conform with this warranty under normal use and service. This shall be the sole and exclusive remedy under this warranty. Products must be returned to Sloan Valve Company, at customer's cost. No claims will be allowed for labor, transportation or other costs. This warranty extends only to persons or organizations who purchase Sloan Valve Company's products directly from Sloan Valve Company for purpose of resale. This warranty does not cover the life of the batteries.

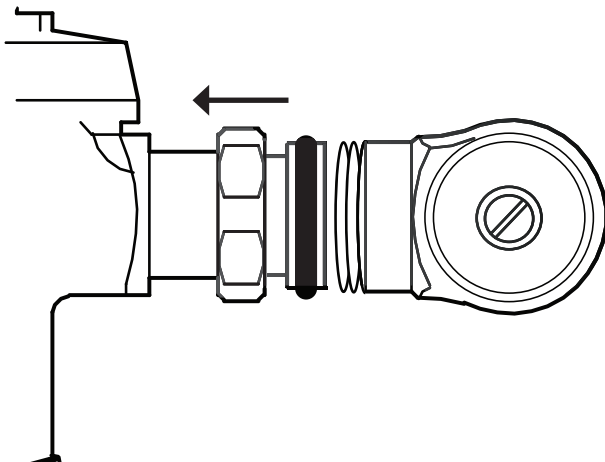
**THERE ARE NO WARRANTIES WHICH EXTEND BEYOND THE DESCRIPTION ON THE FACE HEREOF. IN NO EVENT IS SLOAN VALVE COMPANY RESPONSIBLE FOR ANY CONSEQUENTIAL DAMAGES OF ANY MEASURE WHATSOEVER.**

### 1 – TURN OFF CONTROL STOP



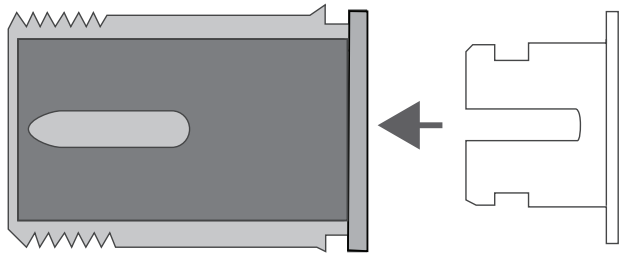
- Ⓐ Turn off control stop.
- Ⓑ Activate flushometer to relieve pressure.

### 2 – DISCONNECT VALVE BODY FROM CONTROL STOP

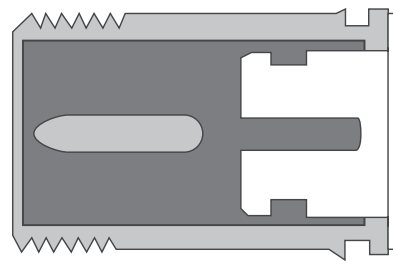


- Ⓐ Use a smooth jawed spud wrench or A-50 Super Wrench or A-109 Plier Wrench loosen connection of the control stop to the tailpiece.
- Ⓑ Loosen, as necessary, the vacuum breaker connection to valve body.
- Ⓒ Rotate valve body, as necessary, to insert flow control into tailpiece.

### 3 – INSERT FLOW CONTROL DEVICE WITH O-RING ASSEMBLED INTO THE TAIL PIECE

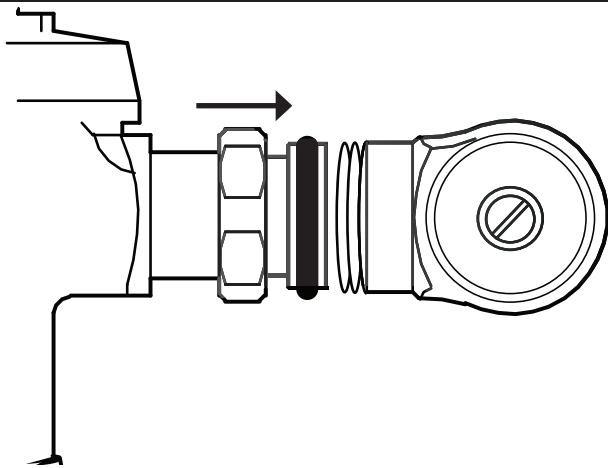


**(A)** Insert flow control into tail piece assembly.



**(B)** Push into tail piece assembly until flush with tail inlet

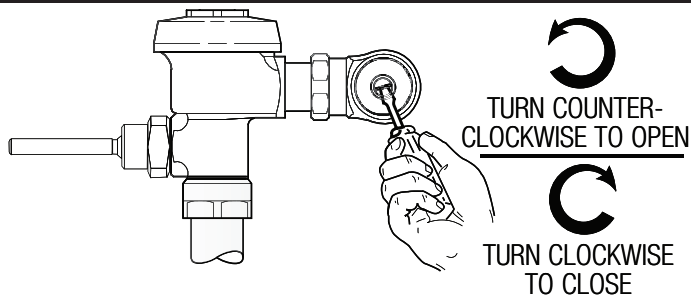
### 4 – RECONNECT AND TIGHTEN CONNECTIONS



**(A)** Reconnect tail piece to control stop and tighten connection.

**(B)** Tighten vacuum breaker connection, as necessary.

### 5 – ADJUST CONTROL STOP



**(A)** Turn on control stop.

**(B)** Activate flushometer.

**(C)** Adjust control stop after each flush until the rate of flow delivered properly cleanses the fixture.

**(D)** Check for leaks.

When assistance is required, please contact Sloan Technical Support Team at:  
**1-888-SLOAN-14 (1-888-756-2614)**

**SLOAN • 10500 SEYMOUR AVENUE • FRANKLIN PARK, IL 60131**

Phone: 1-800-982-5839 or 1-888-756-2614 • Fax: 1-800-447-8329 or 1-847-671-4380 • [www.sloan.com](http://www.sloan.com)